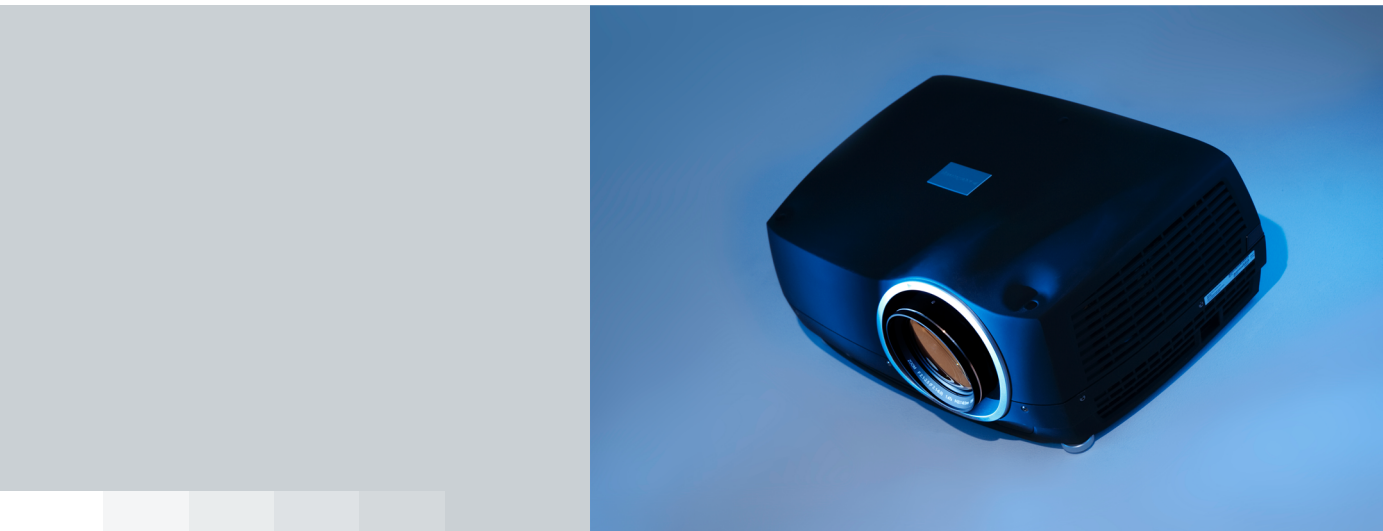


# Cineo35 2.5k

2.5K projector



The cineo35 2.5k offers full 2.5k (2,560 x 1,600 pixels) resolution and is very compact. It has been designed for post production – where color accuracy and resolution are two of the most important requirements. It fits in small and medium-sized suites and collaboration rooms, and provides unaltered imaging for lifelike projection on screens up to four meters wide, as an alternative to grade 1 environments. It comes in two versions, either with traditional lamps, or with LED illumination. Its color rendition and accurate calibration, combined with low noise, makes it perfect for use in small rooms, where distraction levels must be kept at a minimum.

## **DLP® technology**

A DLP based projector for post production provides the same technological footprint and viewing experience as the DLP Cinema™ environment, making sure what you see in post is what you see in exhibition. Most importantly – DLP technology provides unmatched reliability, and does not degrade over time.

## **High resolution lenses**

All projection lenses for the cineo35 2.5k are custom-designed. Using aspherical elements and enhanced Low Dispersion glass provide sustained high contrast, accurate color rendition and lack of aberrations, and above all – excellent sharpness – for unsurpassed image quality.

**PRODUCT SPECIFICATIONS****CINEO35 2.5K**

Concept	single chip, powered lens shift system
Resolution	WQXGA (2560 x 1600)
Brightness	Up to 7500 lumens
Contrast	Up to 7500 : 1
Technology	single chip DLP® projector LVDS DMD™ with DarkChip3™
Aspect ratio	16:10 (WQXGA)
Display colors	30-bit RGB
Latency	~22ms
Computer graphics formats	2560 x 1600 - 640 x 480
Horizontal scan frequencies	15 - 150 kHz (resolution dependant)
Vertical scan frequencies	48 - 190 Hz (resolution dependant)
Video formats	progressive scan
Lens operation	Motorized zoom, Focus, Shift, Iris and Mechanical shutter
Lenses	<p>Ultra Wide Angle</p> <ul style="list-style-type: none"><li>■ Lens number: EN12 / 503-0057-01</li><li>■ Focus range: 0.5 - 5.0 m</li><li>■ Throw ratio<ul style="list-style-type: none"><li>• 0.85 : 1 (WQXGA)</li></ul></li></ul> <p>Short Tele Zoom</p> <ul style="list-style-type: none"><li>■ Lens number: EN14 / 503-0059-01</li><li>■ Focus range: 3.0 - 30.0 m</li><li>■ Throw ratio<ul style="list-style-type: none"><li>• 2.54 - 4.06 : 1 (WQXGA)</li></ul></li></ul> <p>Standard Zoom</p> <ul style="list-style-type: none"><li>■ Lens number: EN41 / 503-0222-00</li><li>■ Focus range: 1.5 - 15.0 m</li><li>■ Throw ratio<ul style="list-style-type: none"><li>• 1.69 - 2.50 : 1 (WQXGA)</li></ul></li></ul> <p>Wide Angle Zoom</p> <ul style="list-style-type: none"><li>■ Lens number: EN43 / 503-0224-00</li><li>■ Focus range: 1.5 - 15.0 m</li><li>■ Throw ratio<ul style="list-style-type: none"><li>• 1.20 - 1.69 : 1 (WQXGA)</li></ul></li></ul>
Image width	0.5 - 20 m
Light source	2 x 300W UHP VIDI
Lamp lifetime	Up to 2500 hours (Eco mode) Up to 2000 hours (Full power)
Computer inputs	2 x DVI-D
Video Input	2 x HDMI 1.3a
Control possibilities	1 x 25-pin DSUB 2 x USB 1 x RJ-45 TCP/IP 1 x 9-pin D-SUB RS232 2 x 12V programmable trigger (3.5mm mini jack)
Dimensions	510 x 223 x 376 mm (WxHxD)

**PRODUCT SPECIFICATIONS****CINEO35 2.5K**

Weight	12.6 kg
Power requirements	8.4A ~100-240V 50-60Hz
Conformances	CE, FCC Class A, UL, cUL and cCSAus
Operating temperature	0 - 40 °C
Storage temperature	-20 - 60 °C
Operating humidity	20 - 80% RH
Color	Black metallic
Warranty	3 years, 500 hours or 90 days on lamp (whichever comes first) up to 5 years total warranty available conditions apply
BTU per hour	

Last updated: 21 Jan 2018

Technical specifications are subject to change without prior notice. Please check [www.barco.com](http://www.barco.com) for the latest information.