

IC8

CEILING LOUDSPEAKERS

In-ceiling / In-wall Loudspeaker



PRODUCT OVERVIEW

With its discreet design, the IC8 2-way loudspeaker is the perfect option for 70/100 V and low impedance sound solutions. It mounts an 8" woofer and a 1" tweeter.

IC series provide excellent sound quality thanks to their infinite baffle philosophy and a top-performance high frequency transducer.

KEY FEATURES

- Two-way ABS speaker, 60 WRMS
- 8" woofer / 1" tweeter
- Built-in audio transformer for 70/100 V use
- Polypropylene woofer that resists heat and humidity
- Front grill may be removed for painting
- Aluminium front grill, rust-proof
- Clip-type input terminals and low impedance / high impedance power tap selector
- Cutting and painting templates included
- Support system with 3 rotating tabs

APPLICATIONS

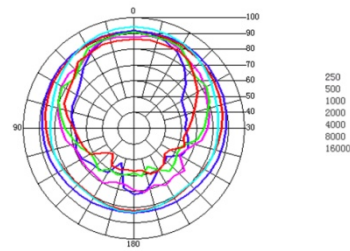
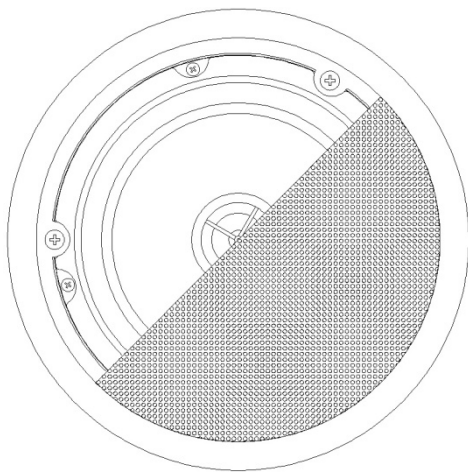
- Corporate and residential buildings
- Commercial premises
- Leisure centres
- Sound reinforcement in clubs, bars, etc.
- Health and sports centres
- Meeting and conference rooms
- 5.1 and 7.1 surround systems
- Auditoriums, museums

CERTIFICATIONS

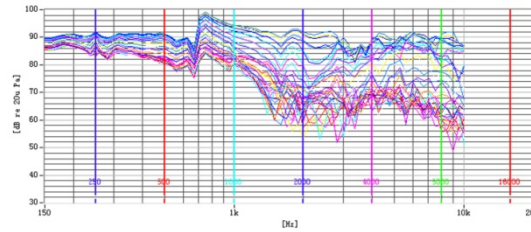
- EN60065:2014
- EN55103-1:2009
- EN55103-2:2009
- 2006/95/EC
- 2004/108/CE

MECHANICAL DIAGRAMS

POLAR DIAGRAMS



HORIZONTAL



TECHNICAL DATA

Nominal low impedance	8Ω
RMS power	60W
Nominal high impedance	100V Line
Power selector	5, 7.5, 15, 30W
Frequency response (-6dB)	55Hz - 20kHz
Sensitivity 1W/1m	91dB
External diameter	245mm
Internal diameter	220mm
Recommended cut out diameter	222mm
Required depth	91mm
Weight	2,3Kg

All product characteristics are subject to variation due to production tolerances. NEEC AUDIO BARCELONA S.L. reserves the right to make changes or improvements in the design or manufacturing that may affect these product specifications.
 Motors, 166-168 08038 Barcelona - Spain - (+34) 932238403 information@ecler.es www.ecler.com